

Projects II

exterior

for
people
who
create





Table of Contents

- 04** Quality
- 06** Facade
- 38** Lap siding
- 42** Individualdecor
- 54** Balconies
- 60** Elements
- 66** Balustrades
and functional structures
- 68** Sunblinds
- 72** Lettering
- 74** Outdoors
- 80** Playground & Sports facilities

Project _Hotel Caldor Münchendorf
Country _Austria
Design _Söhne&Partner Architekten, S&P Architekten ZT GmbH
Image _Severin Wurnig
Decor _0077 NT

Architecture can't be invented anew. The idea is more that of transforming materials, ornaments and typologies that already exist. And with FunderMax Exterior, you'll have an innovative and sustainable building material in a multitude of variants to help you realise your idea creatively

A photograph of a modern building at dusk. The building features a large, illuminated, perforated metal facade that casts a warm glow. Below the perforated section is a glass-walled interior where tables and chairs are visible. The foreground is a gravel-covered area with some small trees and bushes. In the background, there are more trees and a road with some light trails from vehicles. The sky is a clear, deep blue.

for
people
who
create

Max Exterior panels are duromer high-pressure laminates (HPL) in accordance with EN 438-6 Type EDF that are produced in lamination presses under great pressure and high temperature. Double-hardened acrylic PUR resins provide extremely effective weather protection that is particularly suitable for long-lasting balconies and façade claddings.



Scratch resistant



Extremely weather resistant



Easy to clean



Optimal light-fastness



Solvent resistant



Impact resistant



Easy to install



Double hardened

Properties:

- __ Extremely weather resistant
EN ISO 4892-2
- __ Optimal light-fastness
EN ISO 4892-3
- __ Double hardened
- __ Scratch resistant
- __ Solvent resistant

- __ Easy to clean
- __ Impact resistant EN ISO 178
- __ Suitable for all exterior applications
- __ Decorative
- __ Self-supporting
- __ Bending resistant EN ISO 178

- __ Frost resistant -80°C to 180°C
(DMTA-OFI 300.128)
- __ Heat resistant -80°C to 180°C
(DMTA-OFI 300.128)
- __ Easy to install

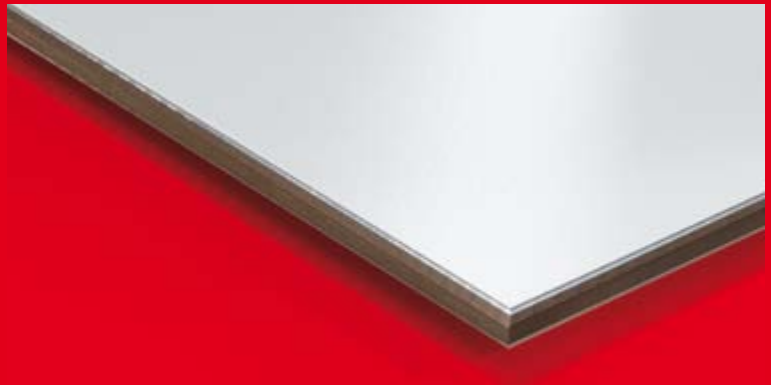
Max Exterior F-Quality

As a standard, Max Exterior panels come with 2 decorative sides. The core is flame-retardant and the surface is light-fast. Thanks to the double-hardened resin, it is also extremely weather resistant. (Fire test EN 13501-1, B-s2, d0)



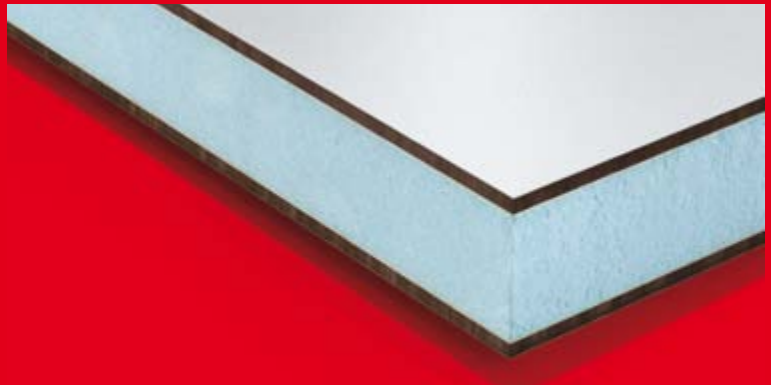
Max Exterior Alu-Compact 42 F-Quality

The design meets F-Quality standards and is additionally provided on both sides with aluminium bands under the decorative layer. This ensures that even perforated panels are extremely stable. (Fire test EN 13501-1, B-s2, d0)



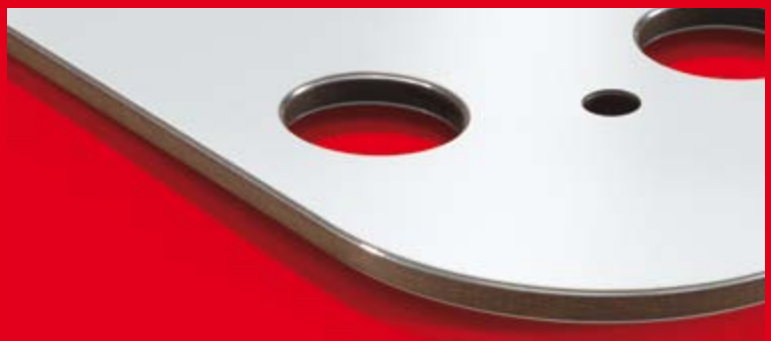
Sandwich Elements

The Max Exterior panels in F-Quality also come sanded on just one side for use in sandwich elements.



Processing

FunderMax offers CNC controlled processing and panel cutting. With state-of-the-art devices, it is possible to produce everything: from simple cutouts for mounting the facade panels, to intricate milling for balcony and fence elements. We can make just about anything you can dream up.



The applications shown are projects which were realised using Max Exterior. When planning and realising your own projects, please note that your local building regulations may require solutions which differ in some details.

Facade

- __structuring of large surfaces
- __back-ventilation for an optimal indoor climate
- __curved shapes



Compact Exterior



Project_Kindergarten Greifswald
Country_Germany
Design_Drebing Ehmke Architekten
Images_ThyssenKrupp Plastics GmbH
Decors_0647 NT, 0687 NT, 0851 NT

Ovular form. Intense yellow.

The outward appearance of this day-care centre is structured by a network of panel joints defined by the horizontal and vertical axes of the facade's various openings. The entrance is the focus of an intense yellow which fades to an almost-white light yellow along the facade, drawing the gaze to the oval's flattest point at the centre.

Facade

- __warm, harmonious colour tone
- __perfectly formed corners
- __forward-looking heat insulation characteristics



Project__ Single-family home
Country__ Germany
Design__ flow.studio GmbH | flow-architektur.de
Images__ flow.studio GmbH
Decor__ 0272 NT



Compact Exterior



Look in, look out.

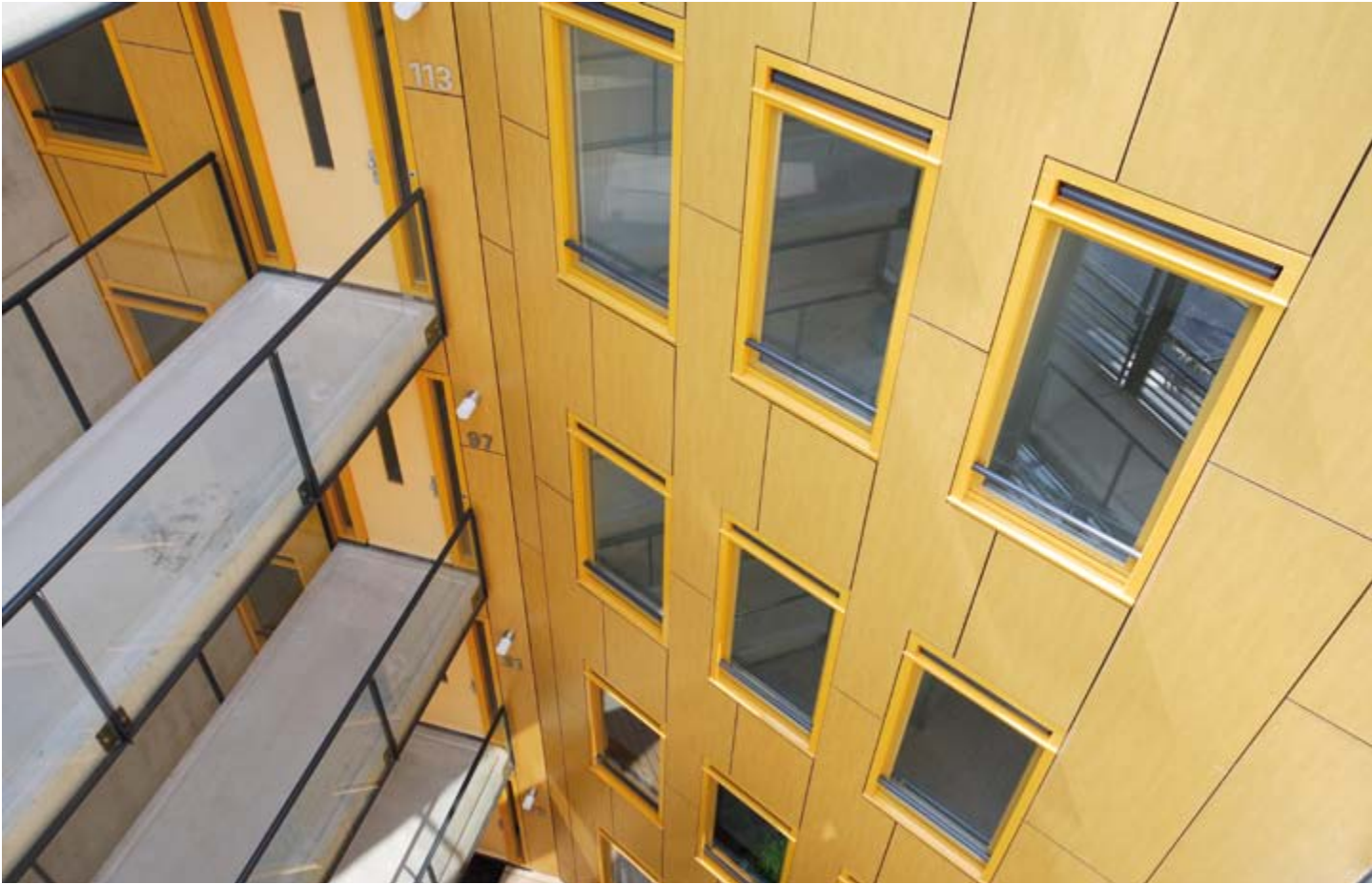
Building a back-ventilated facade with Max Exterior facade panels is an economically smart decision with an eye to the future. After all, you only want to build a single-family home once. The longevity and lightness of the surface will ensure that occupants stay satisfied even after decades have passed.

Facade

- __vertical segmentation
- __large panel formats for wide surfaces
- __supremely lightfast even with Creative decors



Compact Exterior



Project__Apartment-House De Burcht
Country__Netherlands
Design__Office for Architecture & Development Martini BV
Decor__0162 NT



Optimally structured.
Max Exterior's five panel formats offer a high degree of creative latitude.
The layout grid can thus be adapted to the architecture in an ideal way.

Facade

- __easy cleaning guarantees long-term attractiveness of outer surfaces
- __surface is available in gloss and matt
- __decor and surface result in a premium look and feel



Project__Music-center Harmonika Müller GmbH
Country__Austria
Design__Raimund Baumgartner GmbH
Decor__0169 NG (Gloss)

A facade that shines.

Particularly where sales are concerned, clean and high-quality facades attract business and contribute to a positive image. This is just another valuable side-effect of Max Exterior panels, which represent an optimum structural complement to almost any subconstruction in back-ventilated facades.

Compact Exterior

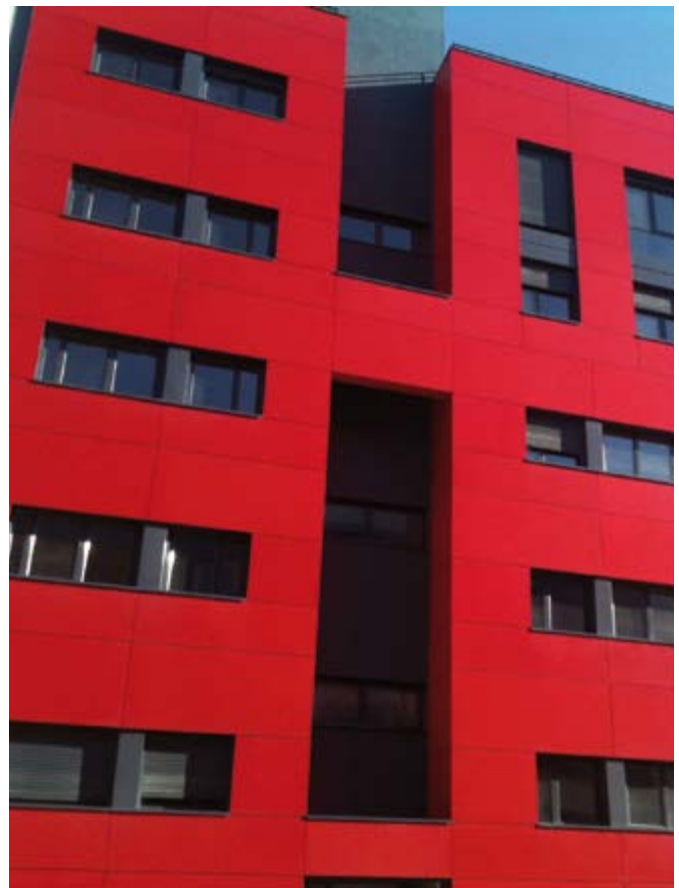


Facade

- scratch and impact-resistance in high-wear areas
- easy cleaning guarantees long-term attractiveness of outer surfaces
- easy realisation of sculptural architecture



Project__Home for young people Móstoles Madrid
Country__Spain
Design__Architects Rita Schlaen & Dardo Cúeno
Decors__0689 NT, 0077 NT



Compact Exterior



Project__Apartment building Madrid

Country__Spain

Design__Architects Jorge Javier Camacho und Mariá Eugenia Macià

Decors__0162 NT, 0531 NT



Clear forms. Bright colours. Residential buildings are increasingly joining the ranks of the design objects within the context of a city's overall architecture. Unobtrusive design is a thing of the past. With their massive blocks and intersecting surfaces, these buildings appear much like sculptures in the urban environment.

Facade

- economical installation thanks to largely uniform panel formats
- technical reliability thanks to decades of experience in exterior applications
- easily adapted to actual conditions during installation

Good all around.

Generously planned objects done with Max Exterior are effective at more than just a distance. Closer inspection of our panels reveal just how easy they are to work with during the preparatory phase—as well as on location, when it comes time to adapt them precisely to the building's existing structures.



Project__Conservatoire Torrevieja (Alicante)
Country__Spain
Design__Architect José María Tomás
Decors__0027 NT, 0073 NT, 0160 NT

Compact Exterior



Project__Office building in Runding near Cham
Country__Germany
Design__ENGL+MEINDL ARCHITEKTEN CHAM
Images__www.engl-meindl.de
Decor__0159 NT

Facade

- tested hail-resistance
- combinable with numerous other building materials
- exciting joint patterns





Project__Visitors' center Eisriesenwelt Werfen
Country__Austria
Design__Architect Werner Schmid
Images__Angelo Kaunat
Decor__0077 NT

Outstanding craftsmanship.

Max Exterior panels were used in the facade of this project, which was recognised with a craftsmanship award. And it was not long before this building was put to a physical test. Severe hailstorms caused considerable damage to many of the materials employed. But not to the tested Max Exterior panels.

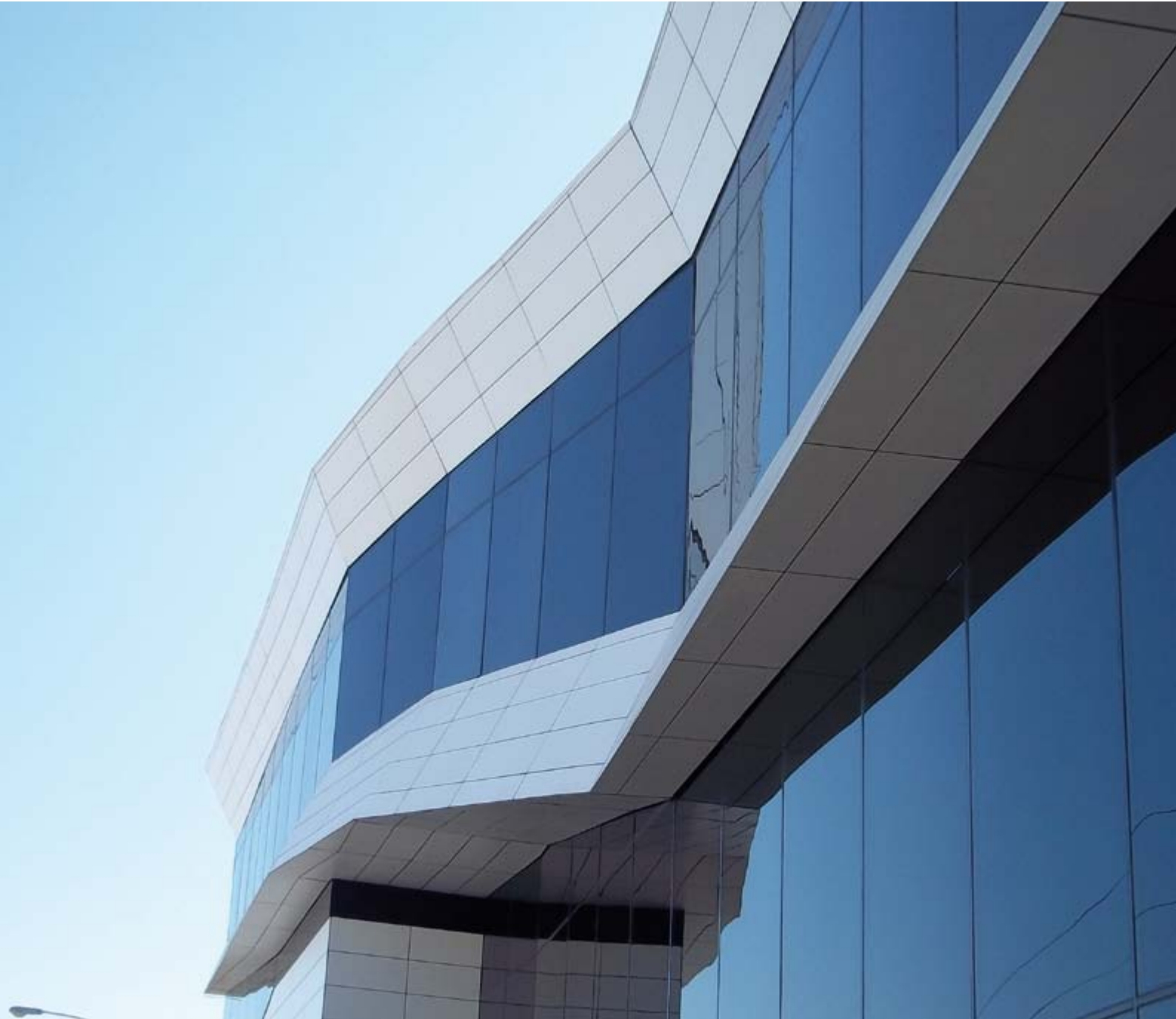
Facade

- exciting play of light and shadows
- horizontal segmentation
- creative freedom in planning



Project__Office building Total Test
Country__Mexico
Design__Architect Lauro Villarreal Sanchez
Images__Juan Pablo Martin del Campo
Decor__0085 NT

Compact Exterior



Contradictory.

Despite its monochrome colouration, dynamic structures and overhangs allow this building to have a powerful effect on its environment. The flowing forms are further emphasised by the long and pointed shapes of the Max Exterior panels.

Facade

- __lower energy costs
- __perfectly suited for restoring and expanding older buildings
- __ideal building biology thanks to rear-ventilation of the facade



Project__Residential building Pontons
Country__France
Design__Atelier BNA, B. Nicolas & G. Mercier Architects
Decor__0168 NT



Compact Exterior



Up, up, and away!

Who says that one can only use Max Exterior for a facade?

From a building's base to its balconies, from facades and roof parapets to roof soffits, Max Exterior cuts a fine figure anywhere it is used.

Including in roofs crowned by dormers.

Facade

- __intense lightfast colours available
- __5 formats for waste minimisation
- __trimming service for timely execution





Project_Blumenhalle St. Veit/Glan
Country_Austria
Design_frediani+gasserarchitettura
Images_Ferdinand Neumüller
Decors_0674 NT, 0689 NT, 0691 NT, 0702 NT

A classy box.

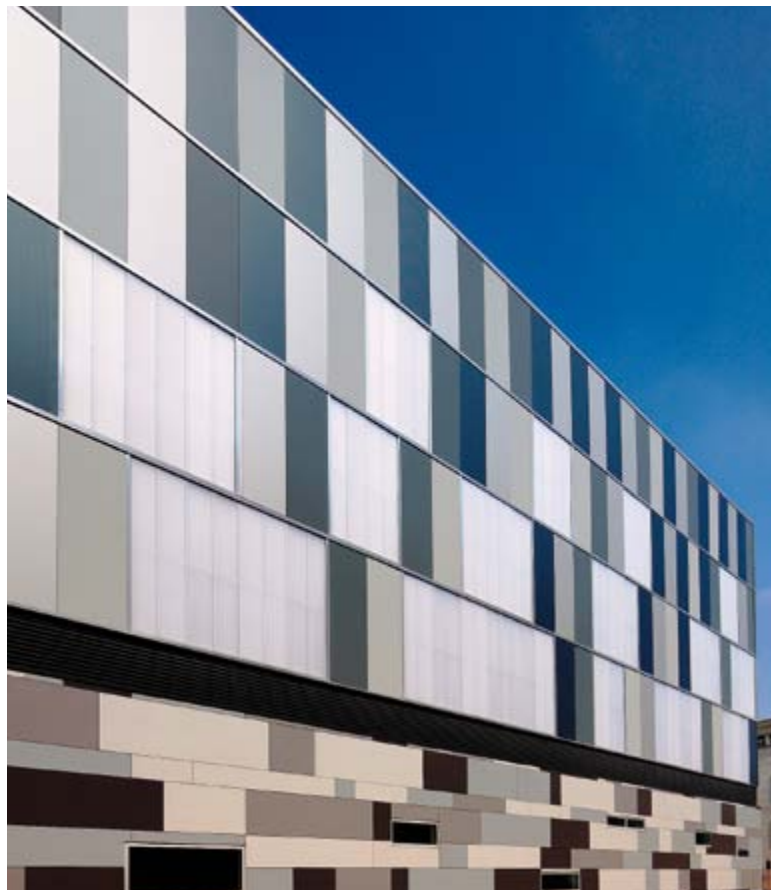
That was the gist of comments in the specialist press when the Blumenhalle was opened. But this building is so much more. It is a meeting place and event centre at which traditional goings-on frequently come together with the modern, intensely coloured architecture. For example when the foyer of the Blumenhalle is opened up to the historic Wiesenmarkt.

Facade

- __multiple shades of grey loosen up large surfaces
- __horizontal segmentation with appropriate optional profiles
- __combines with all common subconstructions



Project__Air France building
Country__France
Design__Agence Valero Gadan
Images__Patrick P. Muller
Decors__0070 NT, 0074 NT, 0075 NT



Compact Exterior

Artistic.

One could interpret it as the tasteful realisation of a painting by Piet Mondrian.

Or one could view it as a puzzle. Max Exterior inspires imaginative solutions with something for everybody and for every point of view.

Facade

- __uniform subconstruction regardless of decor
- __prevention of thermal bridges
- __easy custom trimming with clean edges



Project__ Tower Block Marseille
Country__ France
Design__ Tectum Architecture
Decors__ 0075 NT+ Ice, 0085 NT, 0689 NT

Compact Exterior



Project_Buhler
Country_India
Design_VSDP
Decors__0085 NT, 0328 NT

Facade

- Dualis Ice combinations for metallic effects
- trimming for an exact fit can be done on location with no difficulty
- double-hardened surface guarantees long-lasting beauty



Compact Exterior



Project__ Sparmarkt, Marchtrenk

Country__ Austria

Design__ archinauten - dworschak + mühlbacher architekten zt gmbh

Images__ FunderMax/???

Decor__ 0085 + Dualis Ice

Pure dynamism.

The building site is situated on a heavily trafficked roadway, with vehicles moving past the building at high speeds—a dynamic which the building's architecture takes up. The facade's clear lines support visibility and recognisability. A striking feature is the flowing transition between the facade and the projecting roof, rendering the building's shell a statement that can be seen far and wide.

Facade

- __extreme durability and scratch-resistance
- __simple to clean
- __economical installation thanks to large formats



Peak performance.

Upliftingly beautiful and perfectly formed. It's how every entrepreneur would like his business's entrance to be. With the appropriate colour accents in the right places, Max Exterior facades energise the shopping experience.

Compact Exterior



Project__Wissol petrol station, „Smart“ Market, Akhaltsikhe
Country__Georgian Republic
Design__Architect Tengiz Kvantaliani, Studio ARCI
Realisation__Eurofasad Ltd.
Decors__0706 NT, 0736 NT



Facade

- __environmentally friendly production of Max Exterior panels
- __long-lasting and maintenance-free
- __FSC and PEFC-certified



Project__Operational plant ZOERKLER GEARS GmbH & Co KG
Country__Austria/Burgenland
Design__Architekten Mühlbacher Marschalek in Kooperation mit Marschalek Architekten ZT Ges.m.b.H.
Images__Andreas Buchberger
Decors__0074 NT, 0075 NT

Corporate architecture meets world cultural heritage.

The assignment: to combine a commercial building's architecture with a specific quality of life—as a reflection of a company that can combine perfection and innovation with the province of Burgenland's culture and typical joie de vivre. To visualise international high-tech on the outside while at the same time creating a building that is cost-efficient, sustainable and precise in its construction.

Extremely high standards which should also be upheld and made visible by the building's architectural concept. Including the facade with Max Exterior.

Compact Exterior



Facade

- _extraordinary surface effects thanks to Authentic panels
- _sustainably economical
- _high rigidity allows the use of relatively thin panels



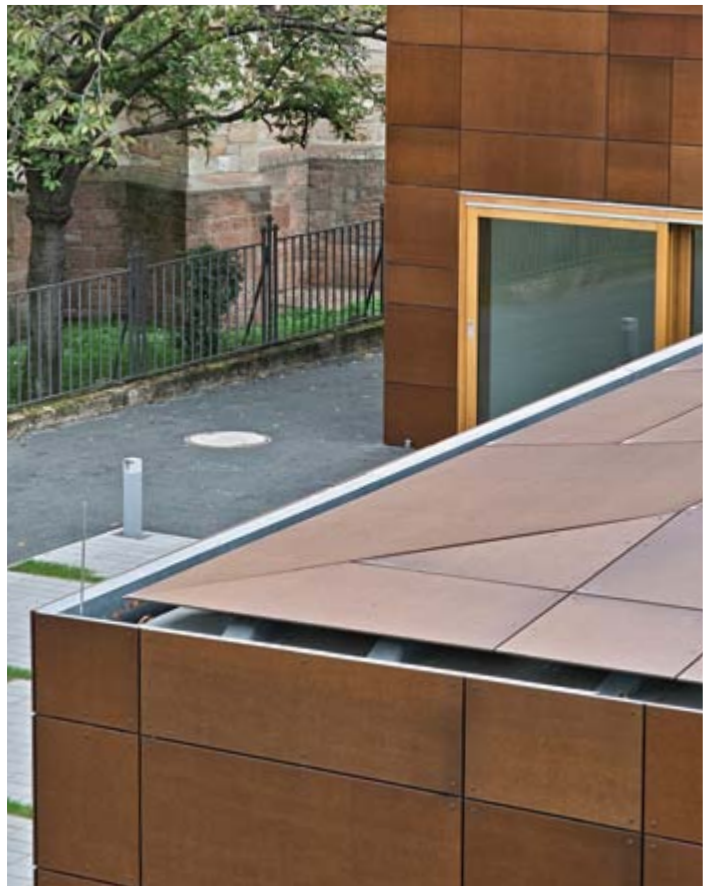
Award-winning unity.

Embedded in the context of the rectory and the church, which is protected as a historic landmark, this community centre forms a harmonious urban ensemble. Alongside an entrance square toward the street, the building formulates a protected courtyard upon which the community meeting hall is oriented. The monolithic approach of unified covering for the building's facade and the flat, slanted roofs has been realised in a consistent manner.

Compact Exterior



Project__Community center, Ginsheim-Gustavsburg
Country__Germany
Design__Hille Architects
Images__Horst Goebel
Decor__AUTN Authentic Nature



Lap siding

- __prefabricated elements
- __well-conceived fastening system
- __accessories available as part of the product range



Project__Office building Lallemand Fermetures
Country__France
Design__Alain Michel, Architect
DPLG & Eric LIEGEOIS, constructor
Decor__0601 NT

Compact Exterior



Project__Plate-Forme Industrielle Courrier (P.I.C.)
Country__France
Design__SERAU Architecture
Decor__0161 NT



Lap siding

- __bendable over large radiuses
- __prefabrication makes possible quick installation
- __stock program available



Project__Hall of residence
Country__France
Design__Atelier Empreinte
Constructor: Logirem
Decor__0169 NT

Compact Exterior



Project__JUFA Campus Futura Bleiburg Sport Resort
Country__Austria
Design__Architecture firm Frei & Wurzrainer ZT GmbH
Decors__0077 NT, 0689 NT

Innovative technology.

A model project in terms of energy efficiency—both on the building's inside as well as on the outer shell with its Max Exterior lap siding elements. Entailing the project's virtually automatic nomination for the Austrian Climate Protection Award.

Individualdecor

__factory trimming and processing guarantees a high degree of exactitude

__all-over individuality

__covered, invisible fastenings



Project__Clientis Bank Leerau

Country__Switzerland

Design__Architektengemeinschaft 4

Images__René Rötheli

Decor/Design__Individualdecor/Atelier 74

Taking its cue from nature.

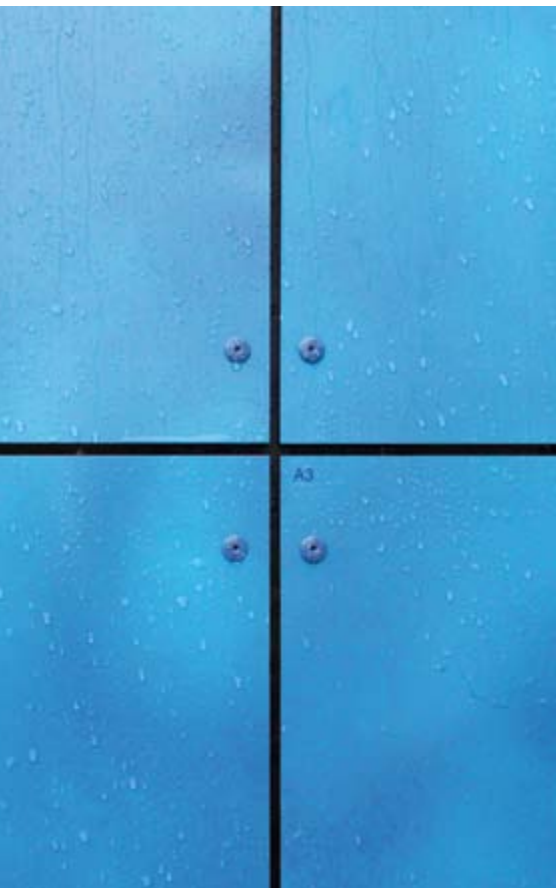
This facade's unusual appearance plays with the stimulating effect of viewing it from various distances. Viewed close up, it gives rise to associations with a forested landscape, while from far off the strongly pixelated floral pattern blends smoothly. The black-and-white pixelation of the park-like ground surfacing outside corresponds to the facade's theme.

Compact Exterior



Individualdecor/Art-Decor

- __motifs can cover multiple panel formats
- __wide range of available art decors
- __art decors allow easy realisation of colour variants



Project__Röthlheimbad with Hannah-Stockbauer hall, Erlangen
Country__Germany
Design__Wiesneth Architekten Fürth
Decor__Individualdecor

Suggestively inviting.
A symbolically powerful facade with a signalling effect. Individualdecors allow Max Exterior to achieve just that. Even on the outside, you see what lies behind. And you still get the invisible benefit of Max Exterior's considerable inner values.

Compact Exterior



Project__Home of generations Eggersdorf
Country__Austria
Design__Architect Gerhard Mitterberger
Decor__P947 NT (Art Dekor)



Individualdecor

__decors made to resemble nature, in brilliant colours

__superlative-quality printing

__individual decors possible on even just one panel



Project__Einfamilienhaus und Büro

Country__Austria

Design__Architekt DI Wolfgang Holzer

Image__Architekt DI Wolfgang Holzer

Decor__Individualdecor

Moving up in the world.

After 50 years, an old building was given a wood-frame addition on top. Its new back-ventilated facade with Max Exterior creates ideal conditions for lowering energy costs. And the latitude for design creativity is shown by the individual design of the facade panels as well as in the construction itself. The south-facing facade projection on the top floor also provides protection from the sun.



Project_Kindergarten „Old Argonner“ Hanau
Country_Germany
Design_AIP Arbeitsgemeinschaft Integrierte Planung GmbH,
Hanau Immobilien- und Baumanagement (constructor)
Decor_Individualdekor



Individualdecor

__high impact-resistance thanks to homogenous core

__very dark colours possible

__long-lasting resistance to sun and rain



Project__Ratio Shopping Center Baunatal

Country__Germany

Design__Arge Ratio-Land Baunatal
MBN Bau AG - Telos Real GmbH + Co.KG

Images__Quabbe + Tessmann/ThyssenKrupp Plastics

Decors__0742 NT, Individualdecor



Project_Town hall Fonbeauzard

Country_France

Design_Architect Axel Lettelier

Images_M. Sierpinski

Decor_Individualdecor

Great personalities.

In architecture, the human factor plays a major role. So almost automatically, the ability to individualise which Max Exterior panels provide is put to use in public buildings and shopping centres—everywhere large numbers of people come together.

Individualdecor

__panels of up to 4 m in length are possible without division

__low weight is structurally advantageous

__well-chosen decors make a high class look-and-feel



Compact Exterior



Project__Best Western Premier Hotel Krakau
Country__Poland
Design__DDJM architecture firm
Decor__Individualdecor

The premium category.

Only the best for the best. Elegant motifs and high-quality features—to be found in Max Exterior panels combined with individual decors. Whether among business travellers or fans headed to a football event, the impression will be first class.

Individualdecor

- __from graphic motifs to photorealistic ones, anything is possible
- __corporate design can be realised perfectly
- __individual design solutions



Project__Optimum Outlet
Country__Turkey
Design__Rennaisance Development
Decor__Individualdecor



Compact Exterior



Project__SK Scheidel Kunststoffe Villingendorf
Country__Germany
Design__Gruppe70, Thomas Scherlitz, Villingen-Schwenningen
Decor__Individualdecor

Heavy traffic.

Whether it's the unified design of facades for highly frequented shopping centres, or for the illustration of a passion for flying on someone's own facade at home— with Max Exterior panels and individual decors, it's always possible to make a harmonious overall impression that extends across all panel formats.

Balconies

- __lean, airy look with high break-resistance
- __easy processing makes possible complicated detailed solutions
- __large areas are enlivened with small panel divisions



Compact Exterior



Project__Pantin hall of residence
Country__France
Design__OFIS Architects
Decor__AUTN Authentic Nature



Balconies

- __economical large fastening distances thanks to high break-resistance
- __many fastening variants possible
- __choose from over 100 decors



Project__Les Jardins d'Alembert
Country__France
Design__Architects Lacaille and Lassus
Decor__0803 NT

Compact Exterior



Project__passiv apartment building Iodenareal bauteil in 144
Country__Austria
Design__teamk2 [architects] ZT GMBH
Decors__0027 NT, Individualdecor

Diversity for all occasions.
No matter whether wood decors, plain colours or creative decors: there have never been this many decors available for exterior use. And if that's not enough, FunderMax offers „Individualdecor“ to get it just right.

Balconies

- __easily combinable thanks to coordinated range of colours
- __front side coloured and rear side in white upon request
- __decades of durability thanks to proven material



Project__Na Križovatkách Bratislava
Country__Slovakia
Decors__0075 NT, 0736 NT

Upgraded.
Balconies are a plus not only for residents' quality of life at home, but also for the outward appearance of this apartment building. Here, the building's outer cladding has a special role to play. It should be decorative as well as safe and secure.



Compact Exterior



Project__ Apartement building Olomouc
Country__ Czech Republic
Decor__ 0674 NT



Elements

- __suitable for all exterior applications
- __aluminium layers make for an even more stable material
- __high-quality prefabricated parts thanks to CNC processing



Project__Sunil Saraogi's Residence
Country__India
Design__GNA
Decor__0161 NT

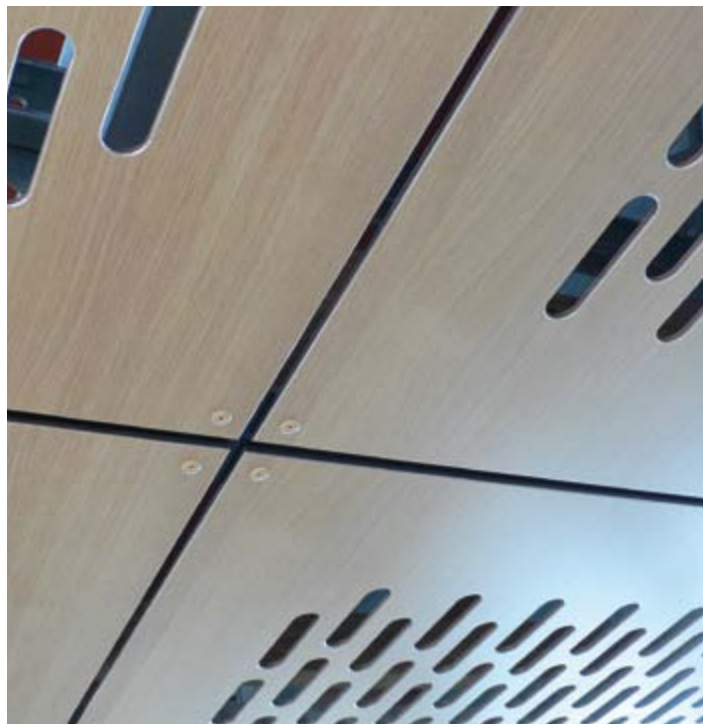
A question of perspectives.

Are roofs and porches only for protection? Or can they be more? A glance upward reveals interesting possibilities. In addition to decorative surfaces, Max Exterior also offers other design options. One can engrave its surface, cut out motifs, cut slits into aluminium-reinforced panels, and much more...

Compact Exterior



Project__Newmarket Railway Station, Auckland
Country__New Zealand
Design__Opus International Consultants Ltd.
Images__John Gibbons
Decor__0125 NT



Elements

__complex cut-out motifs achieved with CNC processing

__a variety of decors and decor variants

__clean details



Project__Apartment building Grand Synthe

Country__France

Design__Architects SEURA

(Florence Bougnoux, Jean-Marc Fritz, David Mangin)

Decor__0792 NT

Compact Exterior



Project__Concecration hall Wels
Country__Austria
Design__Delta Projektoconsult
Decor__0158 NT

Elements

- __easy processing of Max Exterior panels
- __cleanly cut curves and cut-outs possible
- __backlit elements and facade panels



Project__Shiva Kumar's Residence
Country__India
Design__Nagesh Verma
Decor__0161 NT

Individuality regardless of the decor.

Individual decors are a very good thing. But design is done first and foremost with shapes, from atypical shapes to those of the basic geometric variety. Thanks to its physical characteristics, Max Exterior offers these possibilities in nearly all variants—some of which have been used in award-winning urban renewal projects.



Project__Urban renewal project in Vienna

Country__Austria

Design__Ing. Fritz Brandstätter Bauplanungs- & Management GmbH

Images__Ing. Fritz Brandstätter Bauplanungs- & Management GmbH

Decor__0793 NT



Balustrades and functional structures

- __with aluminium layers reinforced panels for creative solutions
- __orientation system based on the use of varying panel decors
- __high-quality prefabricated parts thanks to CNC processing



Project__Open air bath Mitterdorf
Country__Austria
Design__DI PAJDUCH ARCHITEKTUR -ZT GMBH Mürzzuschlag
Decor__0328 NT



Project__University and Research Center Tulln
Country__Austria
Design__Architekt Podsedensek ZT
Decor__0325 NT

Compact Exterior



Project__Local Poubelle „Résidence l'Abbaye“ St Cyr Ecole
Country__France
Design__Tectum
Decor__0601 NT



Project__Music- and Primary School Wördern
Country__Austria
Design__Architect Gottfried Buresch
Decor__0168 NT

Sunblinds

- __many fastening options on both frames and rails
- __adaptation to regional characteristics using individual cut-out styles
- __diverse decors



Project__Apartment building Saint Quen
Country__France
Design__Agency Rafatdjou Makan
Decor__0168 NT



Compact Exterior



Project__Residence hall Noyer Doré
Country__France
Design__Bosom & Onate and NZA Architecture,
Constructor: Antony Habitat
Decor__0601 NT

Highly varied styling methods.

A both attractive and striking appearance. Architects sometimes achieve this by the use of sliding elements or shutters on buildings. The decors and easily-to-process panels from Max Exterior allow elements with very personal designs to be built, taking a project beyond the realm of prefabricated products.

Sunblinds

- __highly stable material makes possible high transparency
- __functional wind protection and privacy in a sophisticated design
- __long fastening intervals lend this construction a lightweight appearance



Project__Car park Voiron
Country__France
Design__GTB Architects
Decor__0168 NT

Compact Exterior



Project__Aural Bergson - Dialysis Center
Country__France
Design__Architects office Gilch-Kalk-Gilch
Images__O. Mirguet
Decor__0162 NT

The dark side.

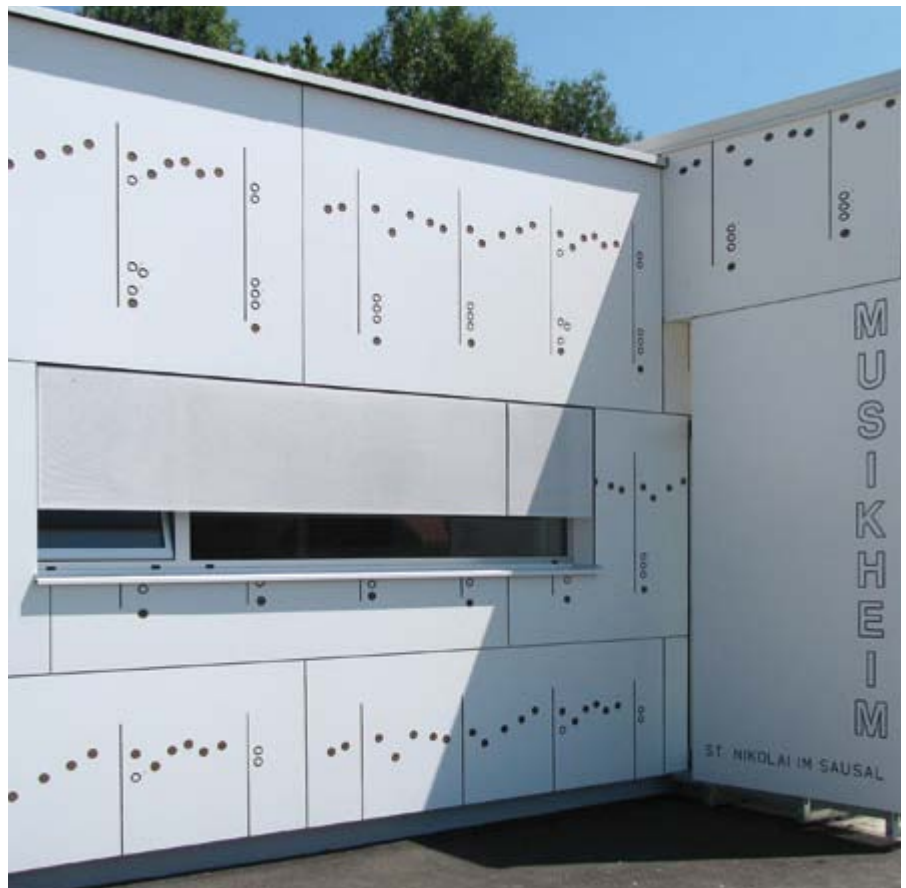
This concept is unknown to Max Exterior panels. Durable, stable elements provide effective protection from the sun and the weather. Whether vertical or horizontal, fixed or moving.

Lettering

- __cut-outs are no problem for Max Exterior panels.
- __cut-outs in the decor layer does not diminish the panel's quality
- __individual, weather-resistant digital printing



Project__ Showroom Carpentry Helmer
Country__ Austria
Design__ Architects Amon & Partner ZT-GmbH
Decor__0037 NT



Project__ Music center of St. Nikolai
Country__ Austria
Design__ Architect Gerhard Mitterberger
Decors__0085 NT

Compact Exterior



Project__Museum Erding
Country__Germany
Design__Walbrunn Architects, Bockhorn//Thilo Brussig Szenarien, Munich
Decors__Individualdecor



Project__Informative sign C. A Sochaux-Montbéliard
Country__France
Design/Realisation__3D INCRUST®
Decor__Individualdecor

Preserved for posterity.
 Just like a museum has the job of preserving things for future generations, Max Exterior provides logos, lettering, and maps of cities and cycling routes with decades of protection from bleaching and weathering, and even from graffiti. This is possible thanks to these panels' double-hardened surface and optimally lightfast quality.

Outdoors

__easy processing makes possible a wide array of shapes

__diverse fastening options

__lasting resistance to sun and rain



Compact Exterior



Project__Pergola House Z
Country__Austria
Design__heri & salli (Heribert Wolfmayr and Josef Saller)
Images__© paul ott photographs
Decors__0085 NT

A different kind of lattice fence. The basic idea of a rustic lattice fence was used to create a cocoon-like steel frame around a swimming pool. With suspended Max Exterior panels and more-or-less function-dependent components, the parametrically organised space serves to sum up the possibilities of surfaces that can be used and experienced.

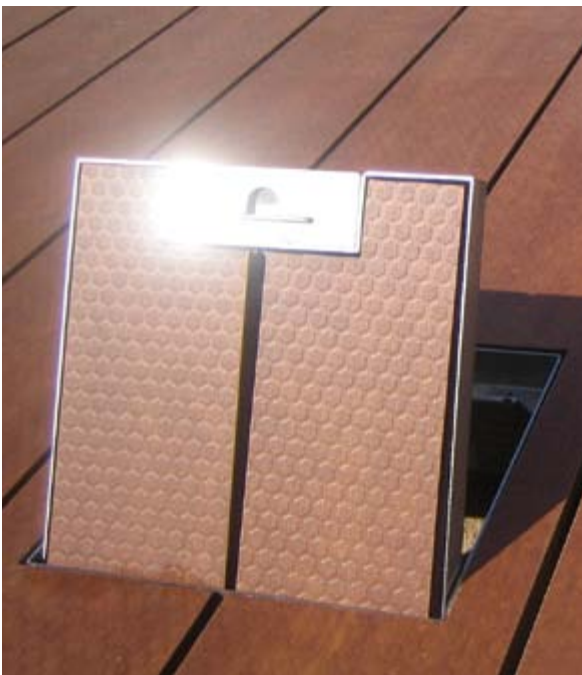
Outdoors

- __easy to clean
- __surface variants from matt to glossy
- __non-slip Hexa surface



Project__KARAS Grill Bettenhausen Kassel
Country__Germany
Design__Metall 24 KG Kassel
Images__SKV GmbH/Peter Krause
Decor__1260 NT

Compact Exterior



Skid-resistant.

A surface that offers a firm foothold. The Hexa surface from Max Exterior. Alongside this quality, these Max Exterior floorboards and waffle-slabs also feature a specially developed fastening system as well as the absence of splinters and zero maintenance requirements.

Project__Terrace in a private house

Country__Austria

Design__Master builder Ing. Eduard Güldner

Realisation__Holz Thurner, Kötschach/Mauthen

Decors__0161 NH - Hexa

Outdoors

- __high degree of prefabrication ensures perfect quality
- __material stability thanks to aluminium inserts makes possible large cut-outs
- __double-hardened surface guarantees lasting beauty



Project__Brigade Gateway
Country__India
Design__Brigade Group (inhouse architects)
Decor__0741 NT

A different kind of landscaping.
Whether in an urban environment or surrounded by nature, Max Exterior also cuts a good figure in unusual applications. For every situation, there is the appropriate decor combined with a lightfast surface.



Project__Memorial place Nikola Tesla, Smiljan

Country__Croatia

Design__Timotej Kritovac d.i.a.

Decors__0160 NT, 0161 NT, 0168 NT

Playgrounds and sports facilities

- __break-resistant and stable
- __weather-resistant
- __CNC-controlled processing



Project _Children's playground Asterix Park*
*with kind permission of SAS QUALI-Cité
Country _France
Decors __0803 NT, 0717 NT, 0736 NT

Where life is colourful and wild.
When it comes to supporting happy kids, young sports fans and athletes in their emotions, the Max Exterior collection has the right decor for everybody.
So which one will it be?

Compact Exterior



Project__Bavina - sport facility and residence hall
Country__Czech Republic
Design__GEBAS Atelier
(Architect Miroslav Gebas/Architect Tomáš Vymetálek)
Decors__wide choice from the Max Exterior range



Sports facility

- __structuring of large surfaces
- __emphasis on the architecture itself thanks to narrow panel formats
- __lean look with high break-resistance



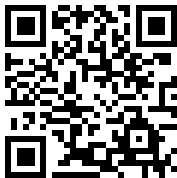
Project__ Stadium Slavia Praha - Eden
Country__ Czech Republic
Design__ Omicron-K
Decors__ 0160 NT, 0169 NT, 0674 NT

Resists wind and weather.

High performance is required of more than just athletes—facade panels are also expected to exceed the norm. Max Exterior's rugged durability is ensured by the patented, double-hardened NT surface, which lets the facade panels provide a high degree of weather-protection.

Compact Exterior





FunderMax France

3 Cours Albert Thomas
F-69003 LYON
Tel.: +33 (0) 4 78 68 28 31
Fax: +33 (0) 4 78 85 18 56
infofrance@fundermax.biz
www.fundermax.at

FunderMax India Pvt. Ltd.

504, 5th floor, Brigade Towers
135, Brigade Road
IND-560025 Bangalore
Tel.: +91 80 4111 7004
Fax: +91 80 4112 7053
officeindia@fundermax.biz
www.fundermax.at

JAGO AG

Industriestrasse 21
CH-5314 Kleindöttingen
Tel.: +41 (0) 56-268 81 31
Fax: +41 (0) 56-268 81 51
info@jago.ch
www.jago.ch

ISOVOLTA S. A. U.

Avda. Salvatella 85-97
Poligono Industrial Can Salvatella
E-08210 Barberá del Vallés
Tel.: +34 937 297 550
Fax: +34 937 190 511
info@isovolta.es
www.isovolta.es

ISO-MAX Spółka Akcyjna

ul. Rybitwy 12
PL-30722 Krakau
Tel.: +48-12-65 34 528
Fax: +48-12-65 70 545
biuro@iso-max.com.pl
www.iso-max.com.pl

FUNDERMAX®

FunderMax GmbH
Klagenfurter Straße 87-89
A-9300 St. Veit / Glan

Tel.: +43 (0) 5/9494-0
Fax: +43 (0) 5/9494-4200
office@fundermax.at
www.fundermax.at